

TOUCH^{.....}down

Document Rev1

User Manual

LOGIC
office

Cable Handswitch
for installation
below the desktop



Contents

1	Preface.....	3
2	General	3
2.1	Intended Use.....	3
2.2	Functionality TOUCH	3
2.3	Package Contents	4
2.4	Overview	4
3	Mounting Instructions.....	5
3.1	Information regarding the push-push function	7
3.2	Information regarding the user interface panel	8
4	Functions	9
4.1	Display.....	9
4.2	Basic Functions.....	9
4.3	Advanced Functions.....	10
4.3.1	Storing a position	10
4.3.2	Recalling a saved position	11
4.3.3	Enable and disable keylock	12
4.3.4	Menu function	12
5	Appendix.....	13
5.1	Possible faults and remedies	13
6	Further Information	14
6.1	End of life disposal	14
6.2	Technical data.....	14
6.3	Manufacturer	14

1 Preface

Dear customer,

Thank you for choosing a TOUCH cable handswitch from LOGICDATA Electronic & Software Entwicklungs GmbH. You are now in possession of a state-of-the-art product.

2 General

2.1 Intended Use

The TOUCH cable handswitch must be used with **LOGICDATA** control units. The control unit must be installed, initially operated and functional tested by qualified personnel only. Use other than described above is only allowed with permission of **LOGICDATA**.



Note: for definitions and information concerning **LOGICDATA** control units, please refer to the applicable user manual.

Aside of moving your table up and down your **LOGICDATA** control unit is able to carry out other functions.

2.2 Functionality TOUCH

The TOUCH cable handswitch offers the following functionality:

- Touch technology
- Big and comfortable to use buttons
- Strong, graphical picture
- Display of 1/10 inch or cm
- shift mechanism to hide the handswitch underneath the table plate
- Easy and fast underside mounting

2.3 Package Contents

The TOUCH cable handswitch package contains:

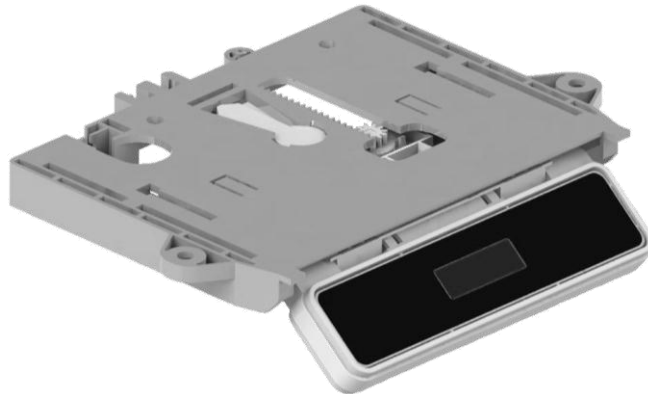


Figure 1: Package contents

- ① TOUCH-UD cable handswitch



Danger: only use original accessories. Parts may only be replaced by qualified service technicians, otherwise the warranty/guarantee shall be null and void.



Caution: do not drop the handswitch on the floor! There is a danger of electric shock due to broken housing parts.



Note: mounting screws are not within scope of delivery.

2.4 Overview



Figure 2: Buttons and Display on TOUCH-UD-MDF-4M2-LD



Note: this document contains illustrations of the user interface design of the LOGICDATA standard handswitch TOUCH-UD-MDF-4M2-LD. The user interface design can be customized, contact LOGICDATA for further information!

3 Mounting Instructions

Mount the TOUCH cable handswitch underneath your desktop in an appropriate position. The following tools are required for installation:

- 1 screw driver



Note: the handswitch is equipped with a shift mechanism. Mount the handswitch with the user interface panel in the pulled out position to reach all screw holes.

1. Unpack the handswitch.



Note: ensure eco-friendly disposal of the packaging materials (separate the plastic parts and cardboard for collection).

2. Place the handswitch on the underside of your desktop on the desired position. Note that the handswitch should be reached comfortably. Its front side should not protrude the desktop front edge.

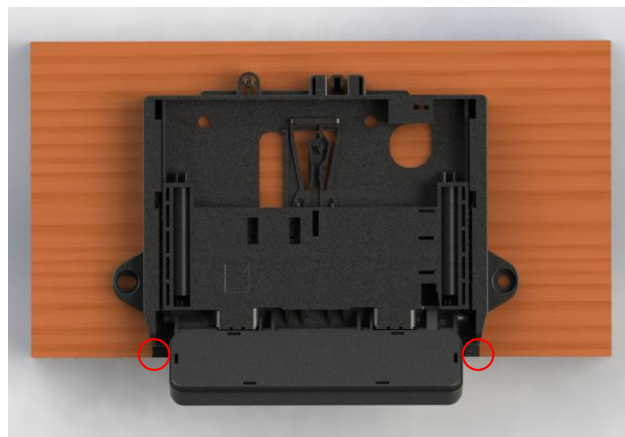


Figure 3: The 2 red marked edges of the handswitch should be flush with the front edge of the desktop (or shifted backwards for desktop plates with radius)

3. Fix the handswitch with 4 screws. Use all 4 screw holes shown below.

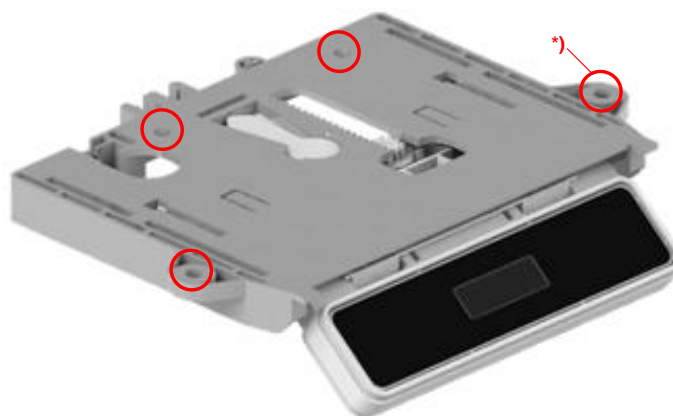


Figure 4: screw holes for mounting the handswitch; the hole marked with *) is a long slot for length compensation during the mounting process



Note: Use the following types of screws to fix the TOUCH cable handswitch

- cylinder-head screws
- round-head screws
- pan-head screws

Max. diameter of thread: 5mm

Max. diameter of head: 10mm



Note: if the screws are tightened too much or if the drill holes in the wooden plate and the mounting holes on the handswitch are not aligned correctly, the handswitch gets deformed and the push push function does not work properly. The correct torque to tighten the screws must be checked depending on the used screw and wood type.

4. Connect the handswitch to the control unit using the jack marked with HS.



Caution: unplug the power cord of the control unit while mounting the handswitch!



Note: 4 lines will be shown on the display after the TOUCH cable handswitch was connected to the control unit and powered. Do not touch the whole user interface of the TOUCH cable handswitch before the 4 lines on the display disappear.



Figure 5: Connection of the TOUCH-UD to a COMPACT⁶⁰⁰ control unit

3.1 Information regarding the push-push function

The TOUCH-UD handswitch is equipped with a push-push function which is used to move out the user interface panel automatically.



Note: to extend the control panel you have to press it while it is retracted. Afterwards you have to release it. The control panel will extend automatically (push-push function). Do not pull while the control panel is retracted. The control panel can get damaged.

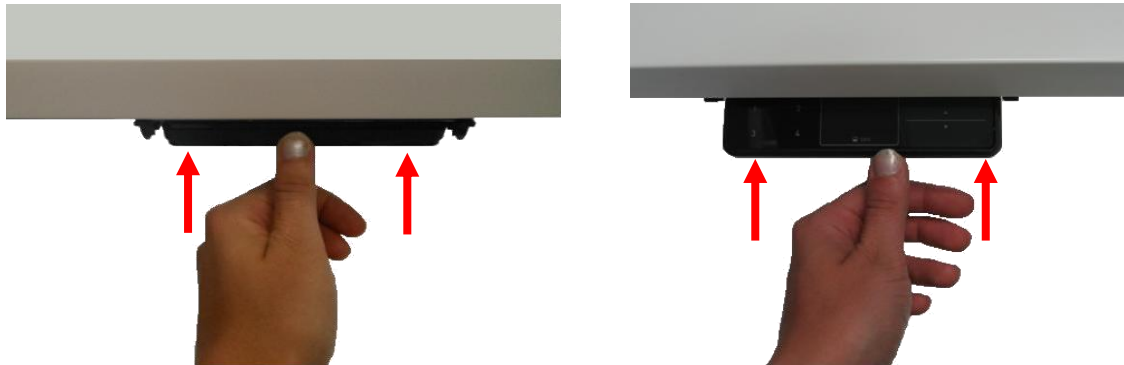


Figure 6: links: press the user interface panel so that it extends automatically; right: lift the user interface panel to a horizontal position and push it into the holder to retract the user interface panel



Note: the connection cable has to form a loop of at least 10 cm to ensure that the push-push function works properly.

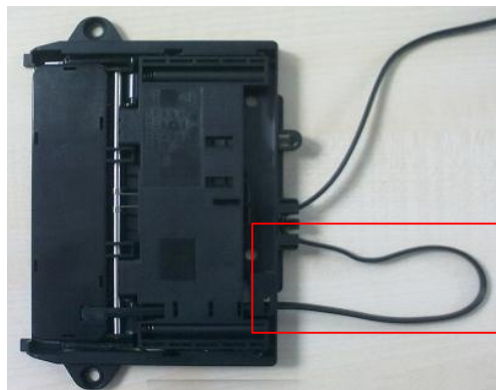


Figure 7: the cable loop highlighted red shall be at least 10 cm long to ensure that the push-push function works properly



Note: depending on the ambient temperature the user interface panel may take varying time to move out (it may take longer if it is cooler)

3.2 Information regarding the user interface panel

The user interface panel is designed to get released from the fixed part in case of too high forces (applied from the top).



Figure 8: the user interface panel released from the fixed part in case of too high forces applied to it

To mount it again on the sliding mechanism, proceed as follows:

1. Put the ends of the springs into the sliding mechanism.



Figure 9: left: springs inside the sliding mechanism: right: springs are in place

2. Press the user interface panel into the sliding mechanism at the depicted positions.



Figure 10: User interface panel pressed into the sliding mechanism

4 Functions

The TOUCH cable handswitch is capable of a wide range of functions, which are described below.



4.1 Display

The TOUCH cable handswitch has a 4 digit display with optional decimal point for position and information display. The current desktop height, error codes and menus can be displayed. The unit (cm or inch) of the displayed height and decimal point settings are depending on the parameters of the control unit.



Figure 11: Display on TOUCH

4.2 Basic Functions

Function	Description	Note
Desk upwards 	For an upward adjustment of the desk push this button. Push this button until the desired height of the desk has been reached.	The desk will continue driving upwards until you release the button, or the maximum height is reached.
Desk downwards 	For a downward adjustment of the desk push this button. Push this button until the desired height of the desk has been reached.	The desk will continue driving downwards until you release the button, or the minimum height is reached.

4.3 Advanced Functions

4.3.1 Storing a position

You can use this function to adjust the desktop to a saved height. To change to a saved position, proceed as follows:



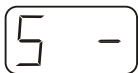
Note: if you are switching on the control unit for the first time, all the saved positions are set to the lowest desktop height (minimum desktop position).

1.  Adjust the desktop to the position you want to save.



The display will show the desktop height (e.g. 13,4).

2.  Press the **memory key**.



The display will read **S -**.

3.  Press the required **memory position key** (e.g. 2).



The display will read **S 2**.

4. The set desktop position will now be saved to the selected memory position key.



You will hear an audible double click and after about 2 seconds the saved desktop position will be displayed.

4.3.2 Recalling a saved position

You can use this function to adjust the desktop to a saved height. To change to a saved position, proceed as follows:

Option A (without double click function)

1.  Press the required **memory position key** (e.g. 2) and hold it down.

The desktop will move until it reaches the saved position. If you release the key before the saved position is reached, the desktop will stop and the saved desktop position will not be reached.

2. The desktop has reached the saved position. Now release the memory position key.



The display will read the current (saved) desktop position.

Option B (with double click function)



Note: availability of the double click function depends on the software configuration of the control unit.

1.  Double click the required **memory position key** (e.g. 2).

2. After the double click, the desktop will automatically adjust to the saved position.



The display will show the current (saved) desktop position.



Danger: when you change the desktop position automatically (especially without using pinch protection), there is a higher risk of pinching. You must therefore ensure that no people or objects are located in the hazardous area or reach into it.



Note: if you press another key while the desktop is changing automatically to a saved position, it will stop immediately. You then have to reactivate automatic desktop adjustment to a preset position.

4.3.3 Enable and disable keylock

The keylock can be enabled and disabled by swiping the screen. After enabling the keylock a key will be shown on the display.



Figure 12: The key indicates that the keylock is enabled



Figure 13: Activating and deactivating the keylock can be done by swiping left or right underneath the display



Note: the direction of movement is not relevant (see Figure 13)




Note: you have to swipe the screen gently without pressing a button while swiping.



Note: the display must be active during activation or deactivation of the keylock (e.g. showing the current height). To activate the display, press one key shortly (e.g. desktop up button).

4.3.4 Menu function

By pressing the **memory position key 1 and 2** and the **desk upwards key** at the same time for more approx. 5 seconds you will enter the menu. After you release the keys, the display will show **S and a number**, e.g. **S 5**. To select a menu option you have to press the **Memory key**. 



Note: The available menu options depend on the parameters of the control unit. For more information about menus please read the user manual of the control unit.

5 Appendix

5.1 Possible faults and remedies

Display does not work (buttons work)

Possible cause	Remedy
Cable is defective	Replace the handswitch
Display is defective	Replace the handswitch
Microcontroller is defective	Replace the handswitch
Handswitch is defective	Replace the handswitch

Buttons do not work (display works)

Possible cause	Remedy
Cable is defective	Replace the handswitch
Handswitch is defective	Replace the handswitch
Buttons are pressed during installation	Disconnect and re-connect the handswitch to the control unit without touching the user interface

Handswitch does not work (neither display nor buttons)

Possible cause	Remedy
Cable is not plugged in	Plug the plug in the intended jack marked with HS
Cable is not plugged in as intended	
Bad pin contact	Plug off the handswitch and plug it in as intended
Cable is defective	Replace the handswitch

6 Further Information

6.1 End of life disposal

When you no longer require the TOUCH cable handswitch, please note the following for disposal:



Note: the TOUCH cable handswitch is electrical or electronic equipment according to directive 2002/96/EC and therefore marked with the symbol depicted on the left.



Note: ensure eco-friendly disposal of all the handswitch components (separate the plastic and electronic parts for collection).

Also ensure eco-friendly disposal of all the other components (drives, cables, etc.).



Note: this product is RoHS compliant according to directive 2002/95/EC!



Note: this product is REACH compliant according to directive 2006/121/EC (Edict 1907/2006)

6.2 Technical data



Note: you can find the technical data of your handswitch in the appropriate datasheet.

6.3 Manufacturer

LOGICDATA

Electronic & Software Entwicklungs GmbH
 Wirtschaftspark 18
 A-8530 Deutschlandsberg - Austria

Tel.: +43 (0)3462 5198 0
 Fax: +43 (0)3462 5198 530
 Email: office@logicdata.at
 URL: www.logicdata.at